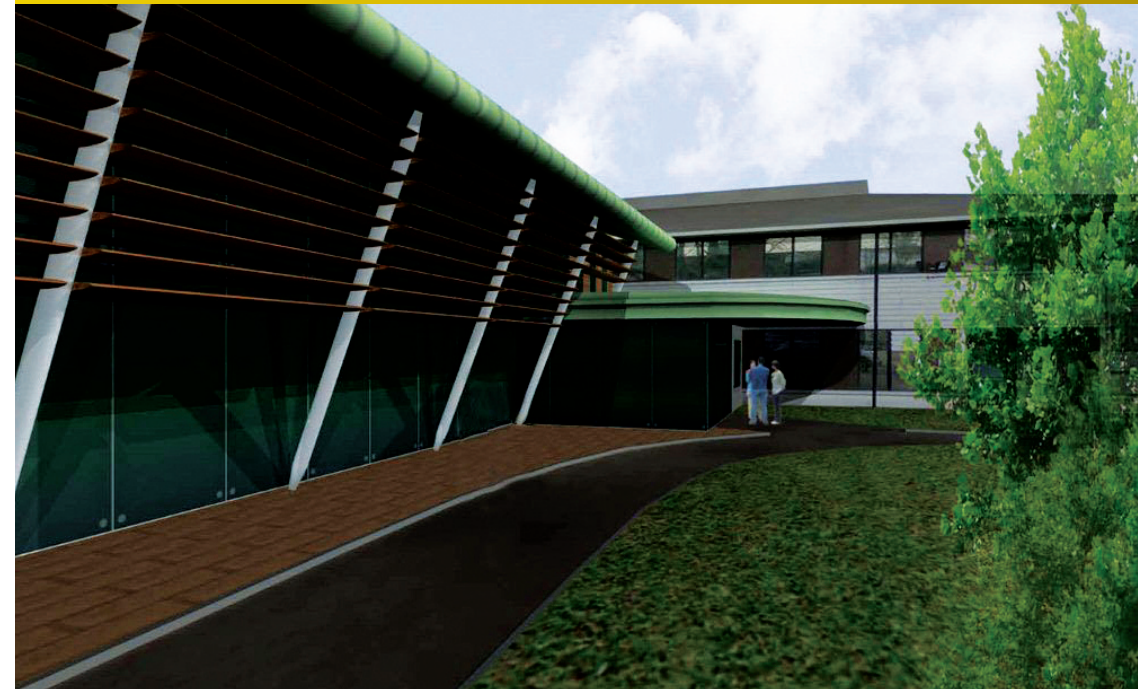


# Course Sponsors



**IMACS**  
INTERNATIONAL MINIMAL ACCESS CENTRE FOR SURGERY  
MAIDSTONE • KENT

## 2011 COURSE PROGRAMME



INTERNATIONAL MINIMAL ACCESS CENTRE FOR SURGERY  
MAIDSTONE AND TUNBRIDGE WELLS NHS TRUST



**OLYMPUS**



**IMACS**  
INTERNATIONAL MINIMAL ACCESS CENTRE FOR SURGERY  
MAIDSTONE • KENT

Academic Centre, Maidstone Hospital, Hermitage Lane, Maidstone, Kent, ME16 9QQ

**OLYMPUS**

Maidstone and Tunbridge Wells **NHS**  
NHS Trust



I am delighted to present the inaugural programme of education and training at the International Minimal Access Centre for Surgery.

The International Minimal Access Centre for Surgery is the culmination of many years experience in advanced laparoscopic techniques at Maidstone and Tunbridge Wells NHS Trust. With over three million pounds of investment in advanced laparoscopic theatres and a state of the art training centre we are able to provide live, interactive video links from Maidstone and our International faculty.

The training centre is equipped with the latest Advanced HD imaging equipment, dedicated seminar and conference rooms and a large lecture theatre.

Maidstone is ideally located for UK and International travel with excellent road and rail links to London and Europe.

Amir Nisar

Director of International Minimal Access Centre for Surgery  
Consultant Surgeon, Maidstone and Tunbridge Wells NHS Trust



## Contents

	PAGE
UPPER GASTROINTESTINAL SURGERY	4
ADVANCED HEPATOBILIARY & SINGLE PORT ACCESS	6
ADVANCED HERNIA SURGERY	7
BREAST SURGERY	8
COLORECTAL SURGERY	9
GYNAECOLOGY	10
SPECIALIST COURSES FOR THEATRE PRACTITIONERS	12
UROLOGY	14
APPLICATION FORM	15
CONTACT US	16
FACULTY	18

## Minimally Invasive Oesophagectomy

Wednesday 20 - Thursday 21 July 2011

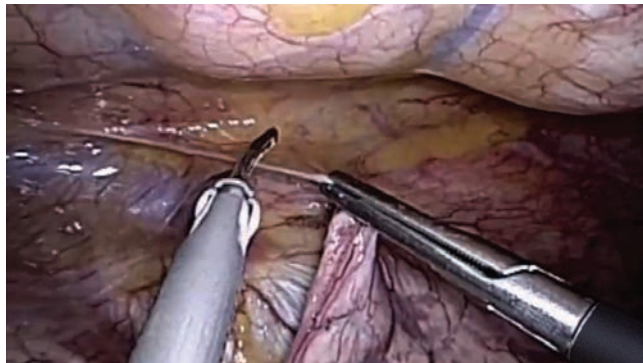
This two day International Symposium for Consultants and trainees will demonstrate and teach the steps of minimally invasive oesophagectomy utilizing live demonstrations, videos and discussions from expert faculty. The individual steps of the procedure will be discussed and demonstrated in detail.

A combined laparoscopic and thoracoscopic approach will be demonstrated with intracorporeal anastomoses and the course will focus on the supine technique. The prone technique will be discussed and the comparative advantages of both techniques will be considered.

Novel advancements in the technique including a description of the anterior oesophageal plane will be described with the surgical importance of this plane for radical cancer clearance and histological evaluation of the specimen.

For Consultants, Trainees and Theatre Practitioners

Course Fees: Consultants £590, Trainees £490, Theatre Practitioners £90



## Laparoscopic Antireflux surgery

Monday 14 - Tuesday 15 February 2011

Thursday 23 - Friday 24 June 2011

Wednesday 7 - Thursday 8 September 2011

Antireflux surgery present formidable technical challenges and careful attention to detail is required to maintain consistent post-operative outcomes. Surgical procedures for GORD are difficult to learn with steep learning curves and this course will address technical aspects of surgery, patient selection and preparation and tips and tricks for new surgeons taking up these procedures.

This course will present safe techniques for GORD surgery aimed at trainees beginning to perform the procedures. Standard 5-port, 4-port and novel 3-port techniques will be demonstrated.

For Consultants, Trainees and Theatre Practitioners

Course Fees: Consultants £590, Trainees £490, Theatre Practitioners £90

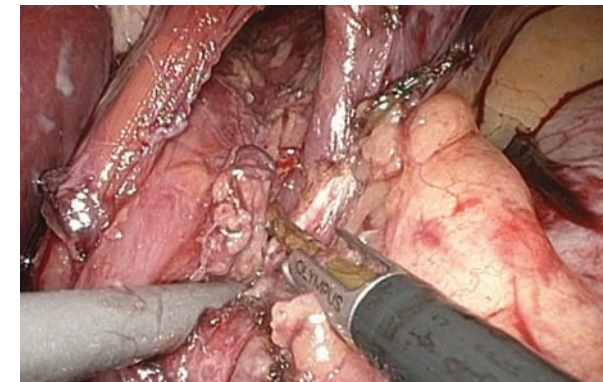
## Advanced Techniques in Benign Oesophago Gastric Surgery

Wednesday 12 - Thursday 13 October 2011

With advancements in surgical instruments, Oesophago-gastric surgical techniques are evolving rapidly. Modern minimally invasive laparoscopic and endoscopic management of GORD, Barretts Oesophagus, Achalasia and GIST tumours will be discussed in this meeting. This meeting will focus on surgical techniques supported by video presentations and panel discussions.

For Consultants, Trainees and Theatre Practitioners

Course Fees: Consultants £590, Trainees £490, Theatre Practitioners £90



## Laparoscopic Cholecystectomy

Monday 7 February 2011

Monday 23 May 2011

Monday 31 October 2011

Cholecystectomy is one of the most commonly performed procedures in the UK with over 50,000 cases performed annually. Often considered a straightforward procedure, it is not without complication and may present technical intraoperative challenges. In this course the subject is covered with live surgery, lectures and practical sessions.

For Consultants, Trainees and Theatre Practitioners

Course Fees: £390

---

## Laparoscopic Exploration of Common Bile Duct and Intraoperative Cholechoscopy

Monday 6 June 2011

This one day masterclass provides an in depth insight into laparoscopic exploration of the common bile duct. This complex technique requires appropriate equipment, theatre set up, trained staff and good surgical skills to perform successful laparoscopic & endoscopic procedures and achieve good results.

The lead faculty for this course is Mr A Nassar, an internationally renowned laparoscopic surgeon with extensive experience in this particular technique, which will open up the whole new field of laparoscopic exploration of the CBD for enthusiast laparoscopic surgeons.

The course is suitable for both senior trainees and established surgeons who wish to take on this surgery, or have performed a few procedures and would like to refine their skills and learn techniques to help them in difficult scenarios.

For Consultants, Trainees and Theatre Practitioners

Course Fees: Consultants £490, Trainees £390

---

## Laparoscopic Incisional Hernia Repair

Monday 4 April 2011

Monday 5 December 2011

Techniques for repair of incisional hernias will be demonstrated and trained with live tissue models. Techniques including mesh repair with prosthetic materials and autologous biomaterials.

For Consultants, Trainees and Theatre Practitioners

Course Fees: Consultants £490, Trainees £390

## Single Port Cholecystectomy and Hernia surgery

Friday 8 July 2011

Single port access surgery is evolving. The two procedures specifically amenable to this technique are Cholecystectomy and Totally Extra Peritoneal (TEP) hernia repair. Live cases and lectures on tips and tricks with discussions and presentation of latest technological developments in this field will be shared.

For Consultants, Trainees and Theatre Practitioners

Course Fees: £690

---

## Laparoscopic Groin Hernia Surgery

Monday 24 January 2011

Friday 29 April 2011

Friday 25 November 2011

The advancements in groin hernia surgery has seen the evolution from traditional open hernia surgery to Laparoscopic Transabdominal Pre Peritoneal (TAPP) hernia repair in mid nineties and now Totally Extra Peritoneal (TEP) hernia repair.

These are NICE recommended techniques. In this course we show live surgery for TEP and TAP hernia repair and discuss variations in technique and tips and tricks for laparoscopic hernia repair.

For Consultants, Trainees and Theatre Practitioners

Course Fees: Consultants £590, Trainees £490

---

## Laparoscopic Complex Hernia Surgical Techniques

Wednesday 30 September 2011

Complex groin and incisional hernias require appropriate knowledge, skills and understanding of the subject. This is an interactive meeting with expert faculty discussing innovative techniques, material and approach to these complex situations.

One session is dedicated to oral presentations, video presentations and poster session. New techniques, complex cases and studies will be encouraged.

Last date for submission is 6th August 2010. Best oral presentation, video presentation and poster will each receive a prize of £250, £200, and £150. (Please see website for further details)

For Consultants, Trainees and Theatre Practitioners

Course Fees: Consultants £190, Trainees £150

## Microbubble Technique Symposium

Monday 14 March 2011

Autumn Date TBA

Ultrasound enhanced with microbubbles has shown great benefits in identifying sentinel lymph nodes in breast cancer.

This First International symposium on the technique affords delegates the opportunity to understand the imaging modality, its role in breast cancer staging and the benefits of sentinel Lymph Node biopsy.

It is a multidisciplinary course with input from Breast Surgeons, Radiologists and Pathologists and will include live demonstrations of the technique and operative SLNB.

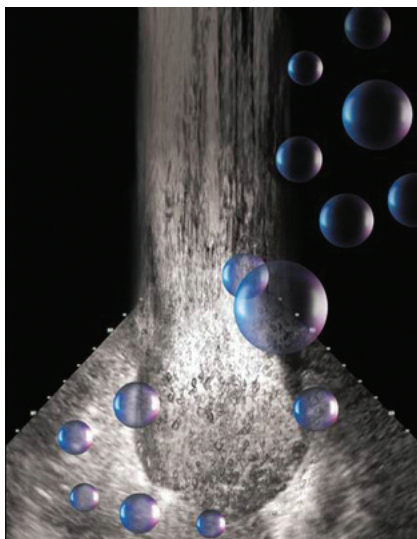
For Consultants, Trainees and Theatre Practitioners

## Sentinel Node Biopsy

November 2011

Sentinel node biopsy has become an established method of staging breast pathology for breast conservation surgery in malignant disease. This course will demonstrate safe techniques for biopsy along with advanced imaging techniques employed for preoperative staging and identification of target nodes.

For Consultants, Trainees and Theatre Practitioners



## Integrated Care Pathway for Colorectal Surgery

Thursday 28 April 2011

Thursday 20 October 2011

Enhanced recovery programmes and Integrated Care Plans for colorectal surgery require a multidisciplinary team approach with each step of the patient's journey being optimised for early discharge and return to normal activity.

This course will focus on the benefits of ICP and enhanced recovery programmes and the collaborative working required to implement these.

For Consultants, Trainees and Theatre Practitioners



## Minimal Access Colorectal Surgery

Tuesday 6 December 2011

With less than 15% of all colorectal resections being performed laparoscopically in the UK, practice is now beginning to change to make Minimally Invasive Techniques available to more patients.

This course will introduce laparoscopic surgery, safe access techniques, dissection, use of energy devices and stapling techniques to provide a safe foundation for trainees and consultants.

For Consultants, Trainees and Theatre Practitioners

Course Fees: Consultants £590, Trainees £490, Theatre Practitioners £90

## Modern Surgical Management of Endometrial Carcinoma

Wednesday 22 June 2011

This course is aimed at Gynae-oncology Consultants, Unit Lead for Gynae-oncology, Subspecialty Fellows in Gynae-oncology and Registrars with a specialist interest in gynecological oncology. The course will cover video presentation and live surgery of the laparoscopic surgical management of endometrial cancer including LAVH/TLH with laparoscopic lymphadenectomy and sentinel node detection for endometrial cancer. Videos of robotic hysterectomy for endometrial cancer and pelvic lymphadenectomy will also be presented and with discussion of the latest surgical trials and the place of lymphadenectomy in the management of endometrial cancer.

**For Consultants, Trainees and Theatre Practitioners**

**Course Fees: Consultants £390, Trainees £290, Theatre Practitioners £190**

---

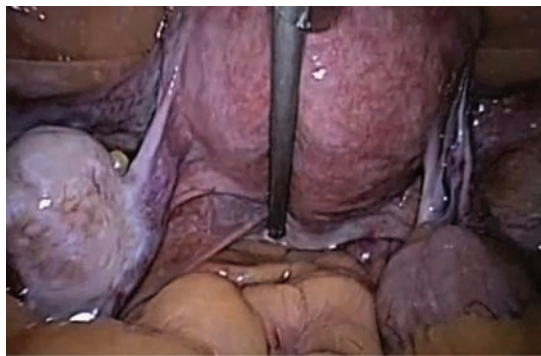
## Sentinel Node Detection in Gynaecological Oncology

Wednesday 21 September 2011

This course is aimed at Gynaecological Oncology Consultants and subspecialty trainees and Specialist Trainees who have an interest in Gynaecological Oncology. The courses will address how to start a sentinel node service and the nuclear medicine aspects of the procedure. Techniques of sentinel node detection in cervical and vulval cancer will be presented, utilising the Gamma probe and blue dye injection. The course will demonstrate open and laparoscopic techniques of sentinel node detection in vulval and cervical cancer. Lectures will include video presentation and there will be live demonstration surgery in the afternoon.

**For Consultants, Trainees and Theatre Practitioners**

**Course Fees: Consultants £390, Trainees £290, Theatre Practitioners £190**



## Intermediate Laparoscopy course

Monday 10 October 2011

This course is aimed at Consultants and SpR's who had basic exposure to laparoscopic surgery. The course is adjusted to the curriculum for ATSM in laparoscopic surgery, and covers anatomy, safety issues and application of laparoscopy in Gynaecology. Lectures will include video presentations of specific procedures. In the afternoon there will be a hands on session in our state of the art laparoscopic laboratory.

This session will include:

- Needle handling, knot tying (intra-corporeal and extra-corporeal sutures)
- Safe use of energy devices and endo-loops
- Morcelation (practical use of morcelator on animal tissue)

Early booking is recommended as the number of places is limited to 21 candidates (max 3 candidates per station)

**For Consultants, Trainees and Theatre Practitioners**

**Course Fees: £290**

---

## Laparoscopic Hysterectomy course

Wednesday 16 November 2011

This course is aimed at Consultants, SPRs nurses and allied health professionals (AHPs). The course will address all types of laparoscopic hysterectomies, anatomy and safety issues related to these surgical procedures.

Lectures will include video presentations and there will be live demonstration surgery in the afternoon. There will be a special break out session for nurses and allied health professional (AHPs) covering important issues regarding equipment for Laparoscopic Hysterectomy and theatre set up.

**For Consultants, Trainees and Theatre Practitioners**

**Course Fees: Consultants £390, Trainees £290, Theatre Practitioners £190**

These two day courses are arranged for small groups of five with full exposure to theatre skills laboratory, hands on practice and much more to offer support for ongoing clinical work.

Structured Training Programmes can be tailored for individuals and whole theatre teams to allow the safe adoption of new techniques, train new team members and enhance skills in perioperative care.

### Laparoscopic Upper GI Courses for Theatre Practitioners

Arranged on demand

This course offers the opportunity for the whole team to train in aspects of complex Upper Gastrointestinal surgery including minimally invasive Oesophagectomy (Totally Laparoscopic and Thoracoscopic with intrathoracic anastomoses).

For Theatre Practitioners

Course Fees: £450

---

### Gynaecology Course for Theatre Practitioners

Arranged on demand

For theatre practitioners who wish to develop their skills in minimally invasive Gynaecological procedures, including laparoscopy and hysteroscopy, including techniques for hystero-resection.

For Theatre Practitioners

Course Fees: £450

---

### Colorectal Course for Theatre Practitioners

Arranged on demand

For teams involved with minimally invasive colorectal surgical procedures, including laparoscopic and endoscopic approaches.

For Theatre Practitioners

Course Fees: £450

---

### Urology Course for Theatre Practitioners

Arranged on demand

Urology teams are often asked to be the most versatile in theatres, with open surgery, laparoscopy, minimally invasive lower tract procedures and endourological procedures within the same environment.

For Theatre Practitioners

Course Fees: £450

### Theatre Practitioners Foundation Course

Friday 28 - Saturday 29 January 2011

Friday 1 - Saturday 2 July 2011

Friday 7 - Saturday 8 Oct 2011

Theatre practitioners must start their learning in a calm and non threatening environment. This course provides a sound foundation with in-depth introduction to the minimal invasive environment, instruments, set up and basic surgical procedures.

For Theatre Practitioners

Course Fees: £200

---

### Theatre Practitioners Intermediate Course

Friday 18 - Saturday 19 February 2011

Friday 5 - Saturday 6 August 2011

Thursday 10 - 11 Friday November 2011

The operating theatre environment has changed dramatically over the past ten years, with a greater number of minimally invasive and advanced procedures being performed. Theatre practitioners are now expected to take a greater role in the surgical procedures and must have a more in-depth knowledge of instrumentation and procedural steps. Surgical set-up and procedural steps for liver surgery will be covered in detail, although the core skills demonstrated are applicable to any advanced minimally invasive procedure. Practical hands-on skills will be developed with opportunity to practice in the skills lab.

For Theatre Practitioners

Course Fees: £200

---

### Advanced Theatre Practitioners Course

Friday 1 - Saturday 2 April 2011

Friday 19 - Saturday 20 August 2011

Thursday 1 - Friday 2 December 2011

In well established laparoscopic centers and units ninety percent of the surgery is performed laparoscopically. This provides the Theatre practitioners with a challenging and stimulating environment.

Its best to get to grips with these complex instruments and the principles of these complex procedures in a stable 'operations skills laboratory' environment in IMACS.

Wide exposure to complex procedures in different specialties is offered in these courses.

For Theatre Practitioners

Course Fees: £300

## Laser Ureteric Stone Removal

Thursday 6th October 2011

The safe endoscopic treatment of ureteric and renal calculi employing semirigid and flexible ureteroscopes is often best accomplished using Holmium laser fragmentation.

Hands on training in all aspects of the safe endourological treatment of calculi will be provided and this course is suitable for trainees and theatre practitioners responsible for urological care.

For Consultants, Trainees and Theatre Practitioners

## Laparoscopic Prostatectomy

October 2011

Radical prostatectomy is a challenging laparoscopic procedure with essential key steps requiring advanced skills. Delegates will be able to practice advanced techniques of dissection, anastomosis and vascular control in a safe environment with discussion of technical hints and tips.

For Consultants, Trainees and Theatre Practitioners



## COURSE APPLICATION FORM

I wish to attend the following course(s) .....

..... on .....

(1) .....

..... on .....

(2) .....

..... on .....

BLOCK CAPITALS PLEASE

Surname ..... Prof/Mr/Mrs/Miss/Ms/Dr

Forename .....

Job Title .....

Department .....

Hospital Address .....

Post Code .....

Daytime Telephone No. ....

Extn. ....

E-mail .....

Mobile Telephone No. ....

Signed .....

Please make all cheques payable to:  
**IMACS - CITI Bank GBS, Re: Maidstone and Tunbridge Wells NHS Trust**

and send to:  
**Dr Najma Amir**  
**Manager, IMACS**  
**International Minimal Access Centre For Surgery**  
**Maidstone Hospital**  
**Hermitage Lane, Maidstone, Kent, ME16 9QQ**

Please submit payment as soon as possible to secure your place - attendance on the course is conditional upon advance payment being received

## Contact Us



For bookings and further information please contact:

**Dr Najma Amir**

**Manager, IMACS**

**International Minimal Access Centre For Surgery**

International Minimal Access Centre For Surgery

Maidstone Hospital

Hermitage Lane

Maidstone

Kent

ME16 9QQ

**Telephone:**

01622 (2)23058

01622 (2)23056

01622 (2)23050

**Email:**

[Najma.amir@nhs.net](mailto:Najma.amir@nhs.net)

**Website**

[www.imacs.org.uk](http://www.imacs.org.uk)



# Faculty



**Mr Amir Nisar**  
Consultant Upper GI Surgeon



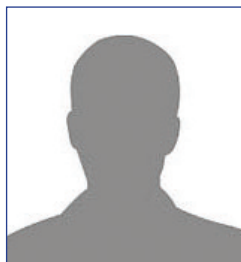
**Mr Haythem Ali**  
Consultant Upper GI Surgeon



**Mr Ahmed Hamouda**  
Consultant Upper GI Surgeon



**Mrs Marie South**  
Consultant General Surgeon



**Mr Simon Bailey**  
Consultant General Surgeon



**Mr Charles Bailey**  
Consultant Colorectal Surgeon



**Mr Omer Devaja**  
Consultant Obstetrics  
& Gynaecology



**Mr Oliver Chappate**  
Consultant Obstetrics  
& Gynaecology



**Mr Rowan Connell**  
Consultant Obstetrics  
& Gynaecology



**Mr Andreas Papadopoulos**  
Consultant Obstetrics  
& Gynaecology



**Mr Steve Montalto**  
Consultant Obstetrics  
& Gynaecology



**Mrs Sue Jones**  
Consultant Breast Surgeon



**Dr George Bird**  
Consultant Gastroenterologist



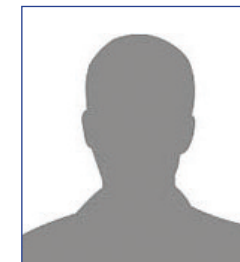
**Dr Adam Harris**  
Consultant Gastroenterologist



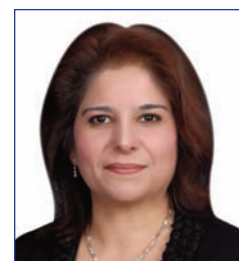
**Dr Philip McMillan**  
Consultant Radiologist



**Dr John Schofield**  
Consultant Histopathologist



**Dr Ali Server**  
Consultant Radiologist



**Dr Najma Amir**  
Manager, IMACS



**Mr Peter A Jones**  
Consultant Breast Surgeon